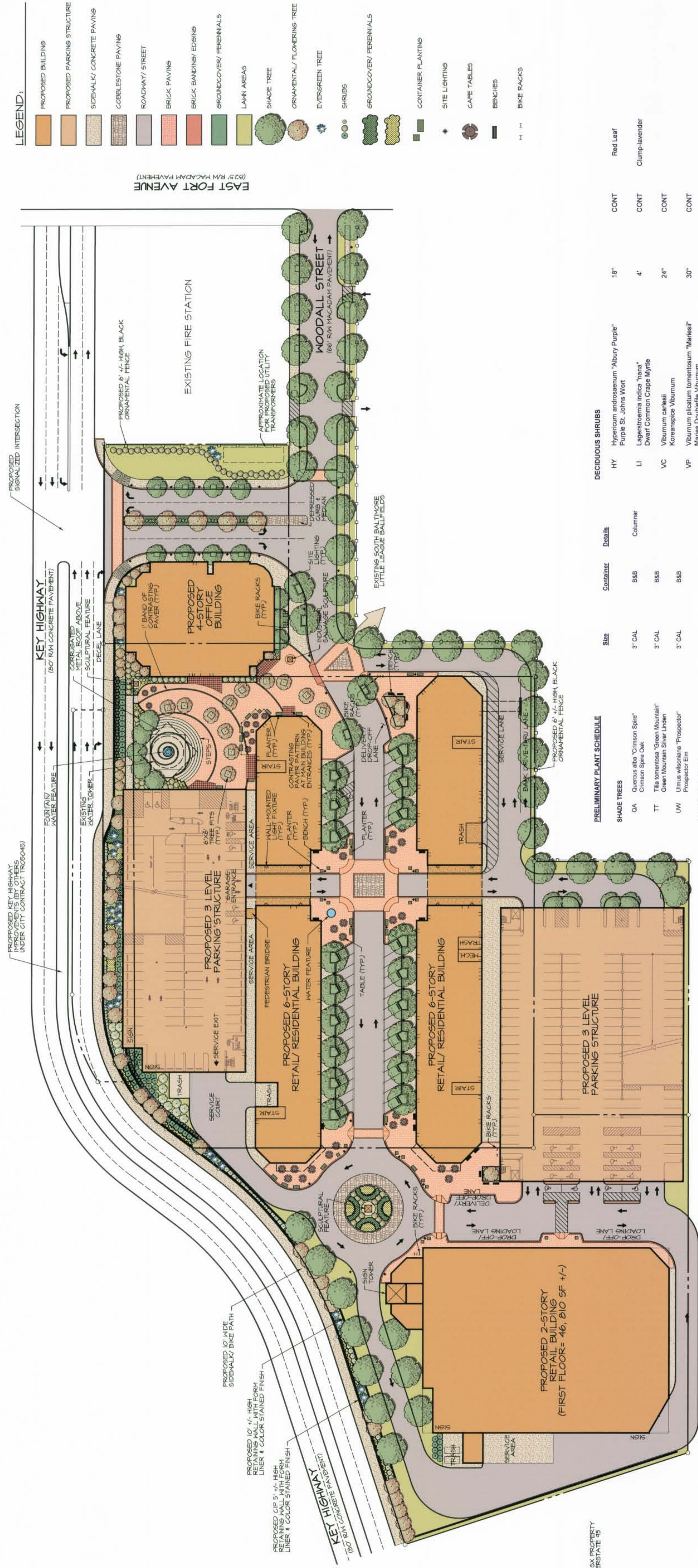


The Shoppes at the Fort - Mark Sapperstein Commercial Real Estate

THE MARTIN ARCHITECTURAL GROUP, P.C.
ARCHITECTS AND LAND PLANNERS
A PROFESSIONAL CORPORATION
240 North 22nd Street Philadelphia, Pa. 19103
P (215) 665-0850 F (215) 661-0064

STV Incorporated
Engineers/Landscape Architects
7125 Ambassador RD, Suite 200
Baltimore, MD. 21244-2722

ILLUSTRATIVE SITE PLAN SCALE: 1"=40'



LEGEND:

- PROPOSED BUILDING
- PROPOSED PARKING STRUCTURE
- SIDEWALK/ CONCRETE PAVING
- COBBLESTONE PAVING
- ROADWAY/ STREET
- BRICK PAVING
- BRICK BANDING/ EDGING
- GROUNDCOVER/ PERENNIALS
- LAWN AREAS
- SHADE TREE
- ORNAMENTAL/ FLOWERING TREE
- EVERGREEN TREE
- SHRUBS
- GROUNDCOVER/ PERENNIALS
- CONTAINER PLANTING
- SITE LIGHTING
- CAFE TABLES
- BENCHES
- BIKE RACKS

EAST FORT AVENUE
(25' R/W MACADAM PAVEMENT)

JULY 19, 2007
N O R T H

SHADE TREES	SIZE	CONTAINER	DETAILS	DECIDUOUS SHRUBS	CONT
OA Quercus alba "Crimson Spire" Crimson Spire Oak	3" CAL	BBB	Columnar	HY Hypericum androsaemonum "Albany Purple" Purple St. Johns Wort	CONT
TT Tilia tomentosa "Green Mountain" Green Mountain Silver Linden	3" CAL	BBB		LI Lagerstroemia indica "hana" Dwarf Common Crapemyrtle	CONT
UW Ulmus ulmoides "Prospector" Prospector Elm	3" CAL	BBB		VC Viburnum carlesii Koreanspice Viburnum	CONT
ORNAMENTAL TREES				VP Viburnum plicatum tomentosum "Marshall" Marshall Doublefile Viburnum	CONT
AL Amelanchier lamarckii Serviceberry	8" HT	BBB	Clump	GROUND COVERS/PERENNIALS	
CC Cercis canadensis Eastern Redbud	8" HT	BBB	Clump	AJ Ajuga "Chocolate Chip" Dwarf Bugle Weed	FLAT
CL Crataegus laevigata "Crimson Cloud" Crape Myrtle	8" HT	BBB	Clump	CB Calamagrostis brachytricha Korean Feather Reed Grass	1 GAL
LF Lagerstroemia indica "Tuskegee" Crape Myrtle	8" HT	BBB	Clump-Fuacia	CP Cerastoglossa plumaginoides Lead Wort	1 GAL
EVERGREEN TREES				IC Iris cristata Dwarf Crested Iris	1 GAL
IA Ilex x attenuata "Foster" Foster's American Holly	10" HT	BBB		HP Hemerocallis "Pardon Me" Pardon Me Daylily	1 GAL
PO Picea pungens "Baker" Baker Blue Spruce	8" HT	BBB		LM Liriodendron muscari "Big Blue" Big Blue Liriodendron	1 GAL
EVERGREEN SHRUBS				LV Liriodendron muscari Liriodendron Variegated	1 GAL
BM Buxus microphylla "Winter Gem" Winter Gem Boxwood	18"	CONT		HA Heuchera americana "Green Spice" Green Spice Coral Bell	1 GAL
IG Ilex glabra "Compacta" Dwarf Holly	18"	CONT		PA Penstemon alpestris "Hainan" Dwarf Fountain Grass	1 GAL
IV Ilex verticillata "Winter Red" Winter Red Winterberry	24"	CONT		SC Sedum caudicicola Stone Crop	1 GAL
JH Juniperus horizontalis "Emerald Spreader" Emerald Spreader Creeping Juniper	18"	CONT		SM Salvia "May Night" May Night Salvia	1 GAL
PJ Pteris japonica Japanese Fern	24"	CONT			
TB Taxus baccata "Repandens" English Yew	18"	CONT			

EXISTING G&S PROPERTY
AND INTERSTATE 45

EXISTING PHILLIPS
SEAFOOD HEADQUARTERS